



**Michael Saunders & Company** | **Commercial**  
LICENSED REAL ESTATE BROKER

2,500 SQ. FT. UP TO 10,000 SQ. FT. AVAILABLE



**6202 - 6234 CLARITY COURT**

SARASOTA, FLORIDA

LEASE **\$5.00 - 6.50** PER SQUARE FOOT, GROSS

ALL PROPERTIES ARE FEATURED AT

[WWW.SARASOTA-INDUSTRIAL.COM](http://WWW.SARASOTA-INDUSTRIAL.COM)

941.957.3730  
OFFICE

ROBERTA "BJ" KOLTON

[RobertaKolton@MichaelSaunders.com](mailto:RobertaKolton@MichaelSaunders.com)



941.954.3830  
FAX

ROBERT "BOB" KOLTON

[RobertKolton@MichaelSaunders.com](mailto:RobertKolton@MichaelSaunders.com)

**SPECIALIZING IN INDUSTRIAL & COMMERCIAL PROPERTIES**

Price and availability is subject to change without notice. The information being provided to you is not guaranteed to be free of errors. No independent verification of the accuracy of any information or documentation is represented by the real estate licensee. If you intend to rely on the information provided, you are notified that you should confirm any such information directly with the appropriate governmental authority, the seller and its counsel, or your own independent advisors and counsel. Any copyrighted material shall remain such. Unless provided in writing, no information or documentation provided shall be distributed, disseminated, or reproduced to any third party.

## Property Information Sheet

6222 Clarity Court  
Sarasota

**Square Feet: 2,500**

Sq. Ft. Office: 0

Sq. Ft. Shop: 2,500

**Land Size: 6.32 Acres** (275,300 sq. ft.)

**Zoning: ILW**

**Year Built: 2001**

**Electrical (Phase): Single**

Amps - Volts: 150 - 110/220

**Ceiling Height: 14'**

**Overhead Doors: 1 - 10' x 12'**

**Loading Dock: No**

**Fire Sprinklers: Yes**

**Parking: In Common**

**Taxes: \$33,181.24**

**Occupancy: At lease execution.**

**Industrial Park: Porter Industrial Park**

**\$0.00**

Sales Price

**\$0.00**

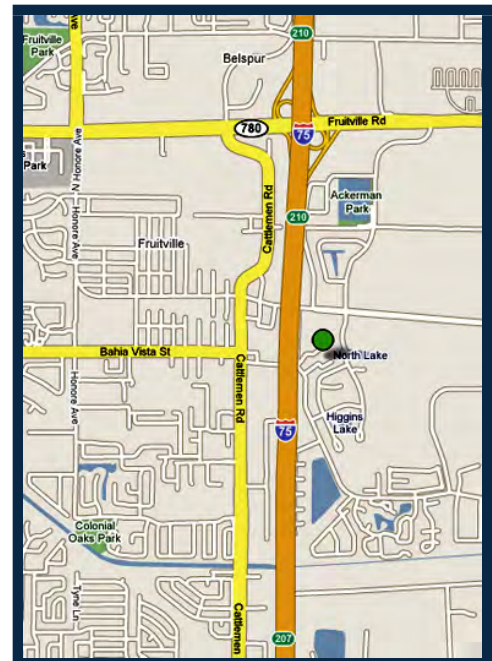
Per Sq. Ft.

**\$1,050.00**

Lease Rate

**\$5.04**

Per Sq. Ft.



2,500 sq. ft. office/warehouse in the Porter Industrial Park, off Porter Road, East of I-75, South of Palmer. Very convenient interstate location. 1 restroom, 1 - 10' x 12' overhead door, 14' ceiling in the warehouse, and single phase power. Unit is pure warehouse with no office area. Lease rate is gross, inclusive of taxes, insurance, water and sewer. Tenant pays own electrical and trash.

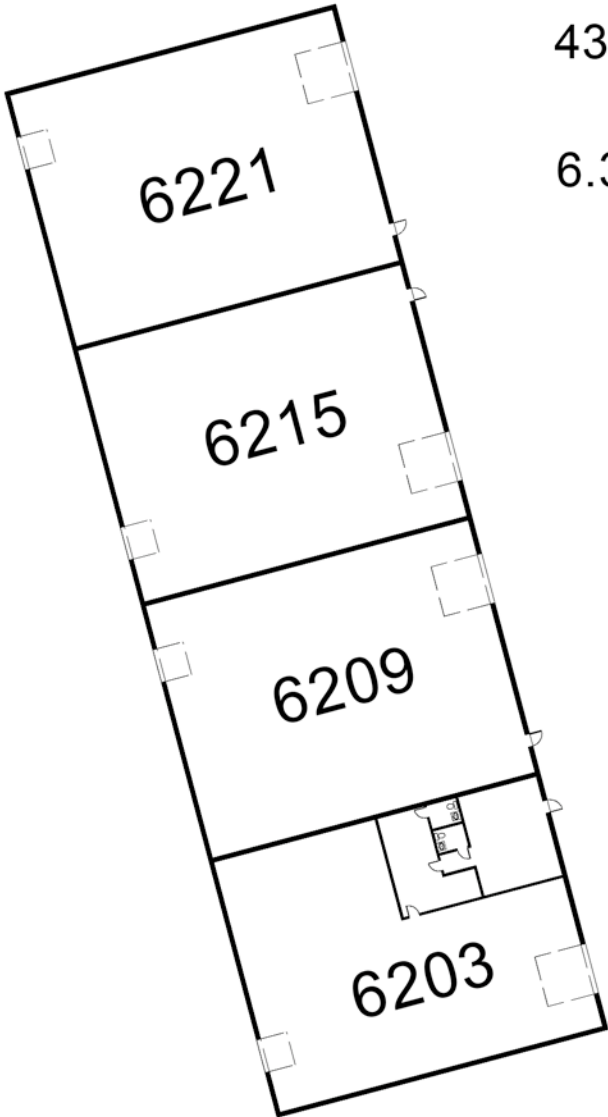
Call Bob or Roberta Kolton at 941.957.3730 for more information.

THE INFORMATION CONTAINED HEREIN PRESENTED IS BELIEVED TO BE FACTUAL TO THE BEST OF OUR KNOWLEDGE BUT SHOULD NOT BE CONSTRUED TO BE WARRANTED BY MICHAEL SAUNDERS AND COMPANY.

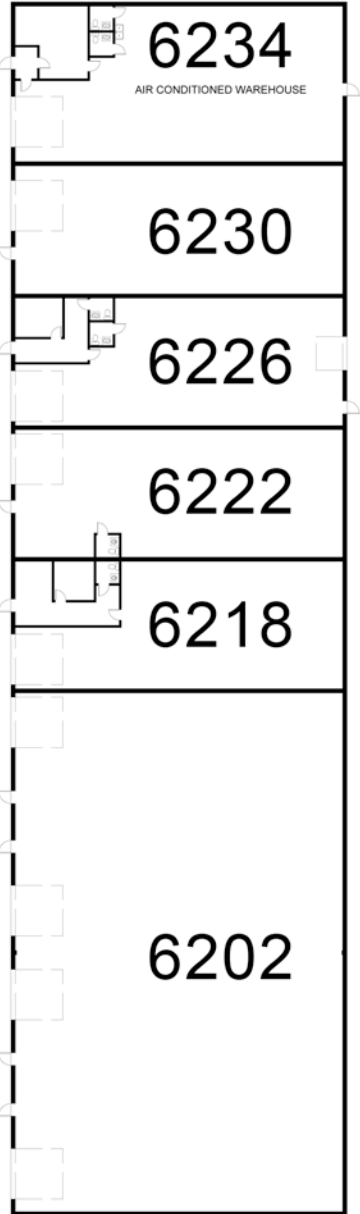
# PORTER INDUSTRIAL PARK

## 6202 - 6234 CLARITY COURT

SARASOTA, FLORIDA



2 BUILDINGS  
---  
43,040 SQ. FT.  
---  
6.32+/- ACRES  
---  
10 UNITS



NOTE: Not drawn to exact scale. Some measurements are approximate. Do not duplicate, publish, modify or otherwise distribute these materials unless specifically authorized by Bob Kolton, Roberta Kolton or Michael Saunders & Company. The information being provided to you is not guaranteed to be free of errors. No independent verification of the accuracy of any information or documentation is represented by the real estate licensee.