



Michael Saunders & Company[®] Commercial
LICENSED REAL ESTATE BROKER

4,500 SQ. FT. INDUSTRIAL SPACE



2225 INDUSTRIAL BLVD., UNIT B

SARASOTA, FLORIDA

LEASE \$2,250 PER MONTH + CAM

ALL PROPERTIES ARE FEATURED AT

WWW.SARASOTA-INDUSTRIAL.COM



ROBERTA "BJ" KOLTON

SPECIALIZING IN INDUSTRIAL & COMMERCIAL REAL ESTATE

941.928.1428 CELL

941.957.3730 OFFICE

941.552.5216 FAX

ROBERTAKOLTON@MICHAELSAUNDERS.COM

Price and availability is subject to change without notice. The information being provided to you is not guaranteed to be free of errors. No independent verification of the accuracy of any information or documentation is represented by the real estate licensee. If you intend to rely on the information provided, you are notified that you should confirm any such information directly with the appropriate governmental authority, the seller and its counsel, or your own independent advisors and counsel. Any copyrighted material shall remain such. Unless provided in writing, no information or documentation provided shall be distributed, disseminated, or reproduced to any third party.

Property Information Sheet

2225 Industrial Blvd., Unit B
Sarasota

Square Feet: 4,500

Sq. Ft. Office: 2,200

Sq. Ft. Shop: 2,300

Land Size: 1.03 Acres (45,000 sq. ft.)

Zoning: ILW

Year Built: 1981

Electrical (Phase): Three

Amps - Volts: 200 - 110/220

Ceiling Height: 12'

Overhead Doors: (3) 22'X12'

Loading Dock: No

Fire Sprinklers: No

Parking: 15+

Taxes: \$7,254.09

Occupancy: Immediate

Industrial Park: Sarasota Industrial Park

\$0.00

Sales Price

\$0.00

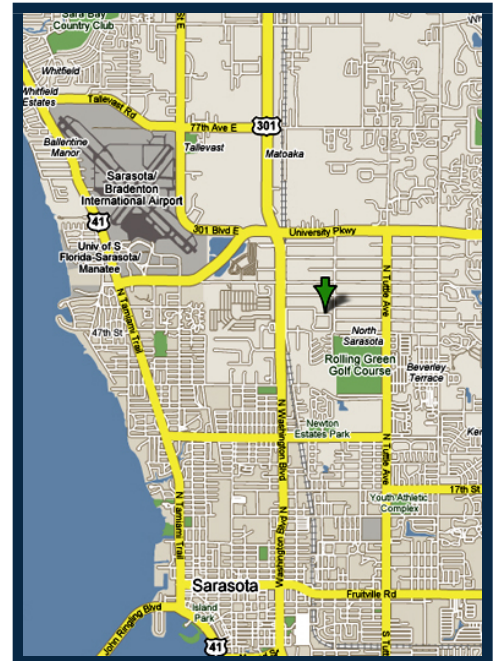
Per Sq. Ft.

\$2,250.00

Lease Rate

\$6.00

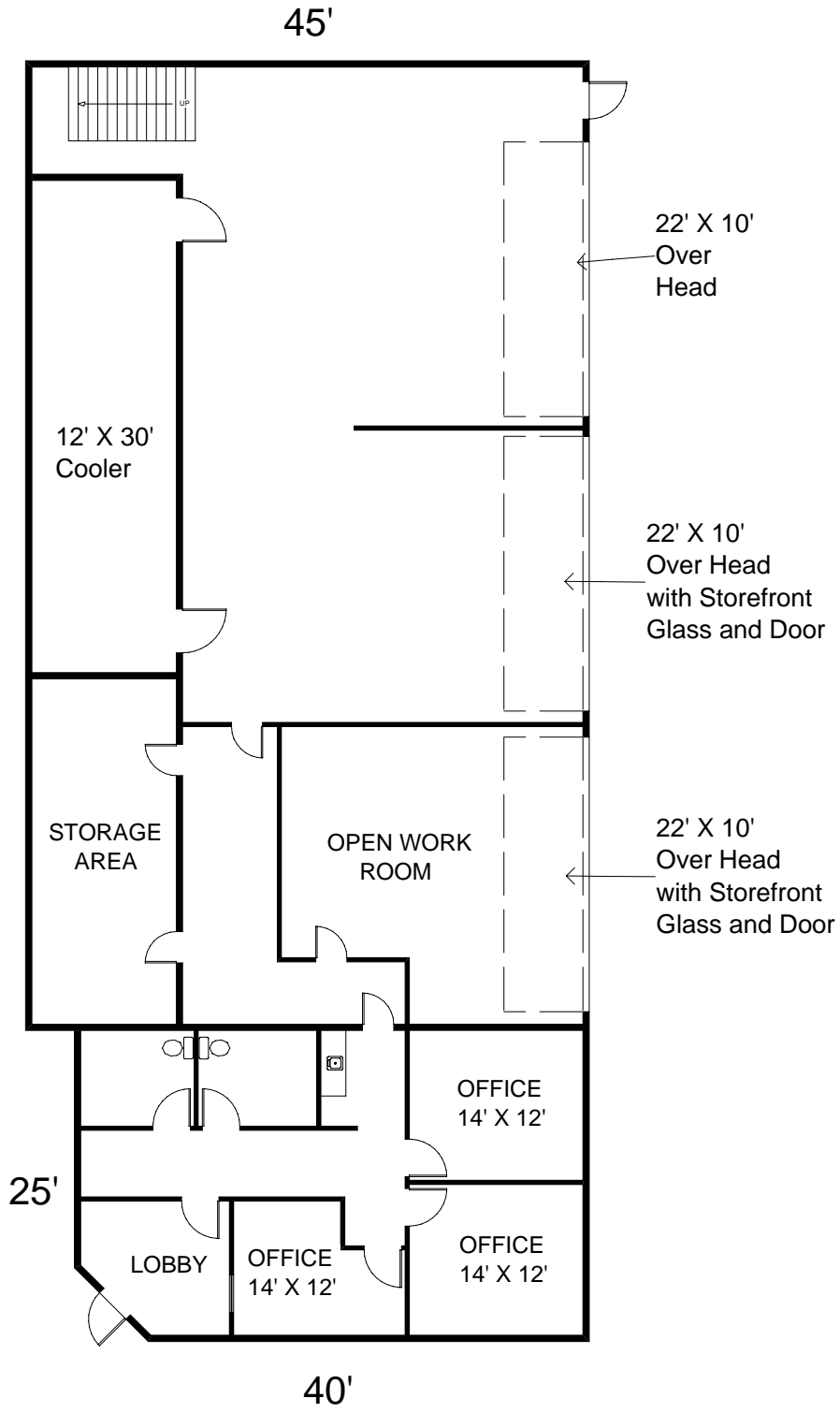
Per Sq. Ft.



4,500 sq. ft. unit with approximately 2,200 sq. ft. of offices. 3 large private offices with lobby, reception window, 2-restrooms and kitchenette, plus large open work room and lots of storage space. Warehouse area has high dropped ceiling, 3-phase power, and a 12' X 30' built-in cooler which can be used as secure storage. \$100 CAM per month covers landscaping, water and sewer service. Tax and insurance stop clauses after 1st year of lease.

Call Roberta Kolton at 941.957.3730 for more information.

THE INFORMATION CONTAINED HEREIN PRESENTED IS BELIEVED TO BE FACTUAL TO THE BEST OF OUR KNOWLEDGE BUT SHOULD NOT BE CONSTRUED TO BE WARRANTED BY MICHAEL SAUNDERS AND COMPANY.



2225 INDUSTRIAL BLVD., UNIT B
SARASOTA, FLORIDA

NOTE: Not drawn to exact scale. Some measurements are approximate. Do not duplicate, publish, modify or otherwise distribute these materials unless specifically authorized by Roberta Kolton or Michael Saunders & Company. The information being provided to you is not guaranteed to be free of errors. No independent verification of the accuracy of any information or documentation is represented by the real estate licensee.