



Michael Saunders & Company®

Commercial  
LICENSED REAL ESTATE BROKER

1,896 SQ. FT. OFFICE / WAREHOUSE CONDO UNIT



1850 PORTER LAKE DRIVE, UNIT 107

SARASOTA, FLORIDA

SALE \$169,000

ALL PROPERTIES ARE FEATURED AT

[WWW.SARASOTA-INDUSTRIAL.COM](http://WWW.SARASOTA-INDUSTRIAL.COM)



ROBERTA "BJ" KOLTON

SPECIALIZING IN INDUSTRIAL & COMMERCIAL REAL ESTATE

941.928.1428 CELL

941.957.3730 OFFICE

941.552.5216 FAX

[ROBERTAKOLTON@MICHAELSAUNDERS.COM](mailto:ROBERTAKOLTON@MICHAELSAUNDERS.COM)

Price and availability is subject to change without notice. The information being provided to you is not guaranteed to be free of errors. No independent verification of the accuracy of any information or documentation is represented by the real estate licensee. If you intend to rely on the information provided, you are notified that you should confirm any such information directly with the appropriate governmental authority, the seller and its counsel, or your own independent advisors and counsel. Any copyrighted material shall remain such. Unless provided in writing, no information or documentation provided shall be distributed, disseminated, or reproduced to any third party.

## Property Information Sheet

1850 Porter Lake Drive, Unit 107  
Sarasota

**Square Feet: 1,896**

Sq. Ft. Office: 576

Sq. Ft. Shop: 1,320

**Land Size: 0 Acres** ( sq. ft.)

**Zoning: PID**

**Year Built: 2000**

**Electrical (Phase): Single**

Amps - Volts: 200 - 110

**Ceiling Height: 16'-18'**

**Overhead Doors: 1 - 12' x 14'**

**Loading Dock: No**

**Fire Sprinklers: No**

**Parking: 3 +/-**

**Taxes: \$1,722.64**

**Occupancy: At closing.**

**Industrial Park: Interstate Lake Industrial Park**

**\$169,000.00**

Sales Price

**\$89.14**

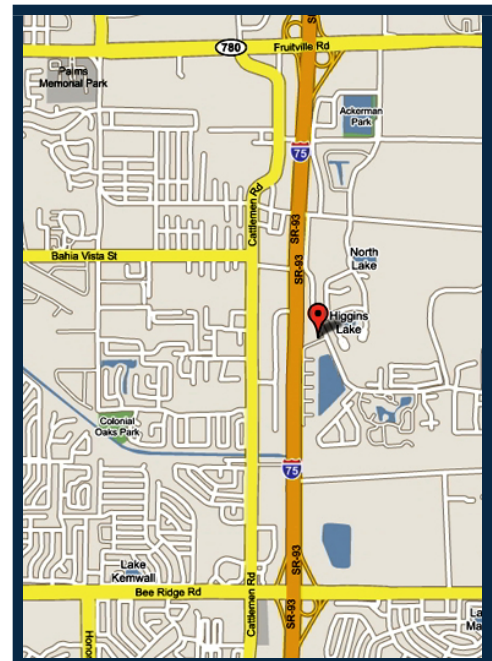
Per Sq. Ft.

**\$0.00**

Lease Rate

**\$0.00**

Per Sq. Ft.



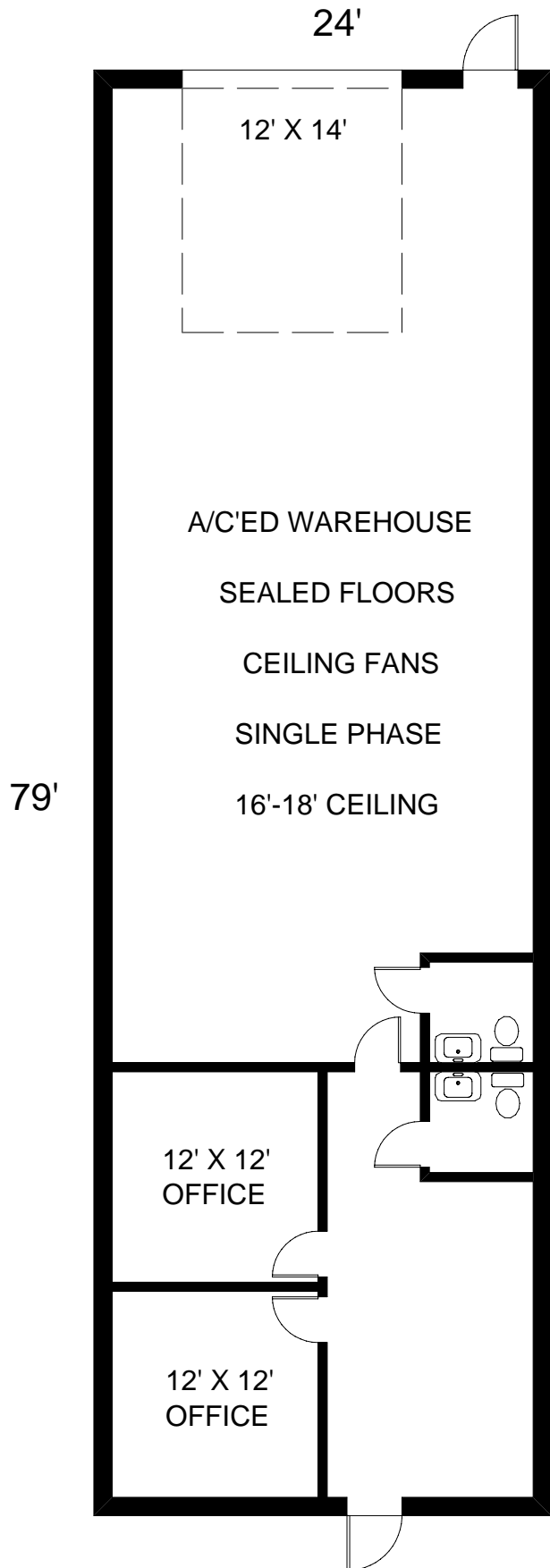
1,896 sq. ft. fully air conditioned industrial condo unit located just east of 75 off Fruitville Road. Nice office with large reception area and 2 private offices, along with 2 restrooms, one for office and one for shop.

A/C'ed warehouse is very clean and features sealed floors, fluorescent lighting, ceiling fans, 16' - 18' ceilings, single phase power, and one 12'x14' overhead door. Unit is ready to move into, and in a great location with easy interstate access.

Association fee is currently \$835.00 quarterly.

Call Roberta Kolton at 941.957.3730 for more information.

THE INFORMATION CONTAINED HEREIN PRESENTED IS BELIEVED TO BE FACTUAL TO THE BEST OF OUR KNOWLEDGE BUT SHOULD NOT BE CONSTRUED TO BE WARRANTED BY MICHAEL SAUNDERS AND COMPANY.



1850 PORTER LAKE DRIVE  
UNIT 107  
SARASOTA, FLORIDA

NOTE: Not drawn to exact scale. Some measurements are approximate. Do not duplicate, publish, modify or otherwise distribute these materials unless specifically authorized by Roberta Kolton or Michael Saunders & Company. The information being provided to you is not guaranteed to be free of errors. No independent verification of the accuracy of any information or documentation is represented by the real estate licensee.